



## Coffee Brief

**Date: June 25, 2022**

### Preparedness Levels & Alaska Fire Activity

Alaska	4
National	2

<p>Light Initial Attack Activity</p> <p>New Fires and Acres: 5 fires For 415 acres</p>
--

There are currently 25 staffed fires with an estimated 529 personnel. Yesterday's large fire growth was 81,375 acres.

Sources: National and AICC Situation Report

### Resources

Aviation within Alaska	
Jumpship	5
Air Tactical	5
Air Tankers	3
Scoopers	4
SEATS	13
Utility	14
T1 Helicopter	
T2 Helicopter	14
T3 Helicopter	6

Crews Committed within Alaska		
Type 1	1	AK
Type 2	2	AK
Type 2IA	3	AK
Module	2	AK
Type 1	10	L-48
Type 2		L-48
Type 2IA		L-48
Module	2	L-48
<b>Total Crews</b>	<b>20</b>	

**AVIATION:** 56 SMJ's available ~ 48 SMJ's committed.

**CREWS:** 5 Type 2 IA crews from the lower 48 arriving at Fairbanks tomorrow via jet. An additional jet load of 4 crews requested to arrive at Anchorage on 6/28.

**MISCELLANEOUS:**

IMT2 AK Black Team is in command of the Lime Complex. IMT2 Green will be assigned after days off.

IMT2 NW Team Lawson is in command of the Clear incident.

IMT2 NW Team 7 Lefevre is in command of the Chitanana incident.

IMT3 Delgado is in command of the Minto Lakes incident.

IMT3 Great Basin is in command of the Fish incident.

IMT2 requested from lower 48 to arrive 6/27.

2 Additional A/A's ordered from lower 48.

IMT3 requested from Washington, unknown arrival.

AICC JIC has been stood up is getting staffed up.

COMC ordered and filled.

ASCO ordered and filled.

MAC Aviation ordered.

*Source: IROC Reports*

---

## Weather Summary

Remnants of two short waves that moved through northern Alaska yesterday will continue to keep increased cloud cover and cooler temperatures across the north and much of the Interior. Expect highs in the upper 60s and low 70s for most of the Interior today.

Tomorrow, high pressure building in from the south will expand and strengthen as the weekend approaches. This will bring hotter and drier weather to the Interior with temperatures into the 80s and RHs into the low to mid 20s. Those conditions have already been in place around South Central for the last few days and will continue again today and tomorrow.

The exception to this heating/drying trend will be along the west coast, where a low coming into the Bering Sea will attempt to bring in moisture and winds for the weekend. It doesn't look like the rain will get very far inland, but the winds will penetrate much of the western Interior. So it looks like this low will enhance fire activity throughout western Alaska.

The area of thunderstorm coverage will shrink this afternoon and continue to do so for the next few days. Expect most storms to be found over the southeast Interior and around South Central including the western Kenai Peninsula, Susitna Valley, Talkeetna Mountains, and Copper River Basin.

In the longer term, the high pressure system in the south is expected to build and shift eastward over the ALCAN border. This will bring widespread temperatures 5 to 10 degrees above normal and suppress shower and thunderstorm activity. A weak low moving through the pattern may help to rekindle lightning activity by the middle of the week.

*Source: Alaska 7-Day Outlook*

---

## Fuels/Fire Potential

Surface fuels are beginning to respond to the warmer and drier weather. FFMC values are increasing in the Interior, the Mat-Su, Copper River, and the Kenai Peninsula. Many areas are at or near Extreme values. Expect FFMCs to continue to increase in coming days. Southwest Alaska is still experiencing growth on existing fires due to dryness of live fuels which is not captured in FFMC.

Subsurface drying has been the main driver of fire spread recently. The Duff Moisture Code (DMC), which is the main component of the Buildup Index (BUI) this time of year, is at extremely dry levels across areas of the Interior, Southwest, South Central and the Kenai. The dry duff layers increase fireline intensity and resistance to control, requiring more time and effort to manage. South Central currently does not have large fires, but fuels are conducive to support spruce-driven fire spread with any new ignitions there.

Prolonged warming and drying will increase the Buildup Indices (BUIs) across greater areas of Alaska and continue to support large fire growth across the state.

*Source: Alaska 7-Day Outlook*

---

Fuels Status [Alaska Fire and Fuels Map](#)

**A Fuels and Fire Behavior Advisory has been issue for Alaska.**

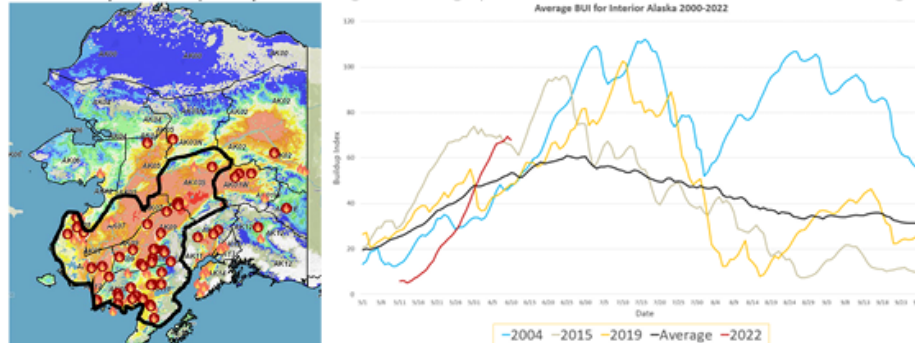
## Fuels and Fire Behavior Advisory Southwest and Central Interior Alaska

Valid: June 12 – June 25, 2022

**Subject:** Exceptional landscape flammability and widespread ongoing large fire growth.

**Discussion:** The Buildup Index (BUI) is the best indicator of seasonal severity and overall flammability of fuels in Alaska. It represents deeper drying in the duff layers and greater fuel availability. Large fire growth occurs from mid-June to mid-July surrounding the summer solstice when long days and rapid drying can produce elevated BUI levels. Southwest Alaska normally experiences shorter periods of high flammability as they are prone to intermittent rain due to marine influences. Beginning in the middle of May, southwest Alaska has experienced continued hot, dry, and windy conditions, drying out fuels, retarding green-up and producing significant large fire growth. Many fires in southwest Alaska have experienced exceptionally large fire growth over the last week, which is unusual for the area.

**Difference from normal conditions:** The attached graph shows the current 2022 BUI trend for the Interior of Alaska compared to other busy fire seasons. 2022 has been above average BUI since May 31, and higher than 2015 levels since June 6. Southwest Alaska has already experienced abnormally large fire growth for this time of year. Multiple days of wetting rain adding up to more than one inch will be needed for lasting relief.



### Concerns to Firefighters and the Public:

- Spruce stands are extremely flammable, will ignite readily, exhibit rates of spread more than one mile per hour, torch, and spot prolifically up to ¼ mile or more, and exhibit intense crown fire behavior.
- Temperatures above 80 degrees and RH below 30% are important thresholds for rapid spread and crown fire behavior.
- Green fuels are stressed and encouraging spread into riparian areas and less flammable hardwood forests.

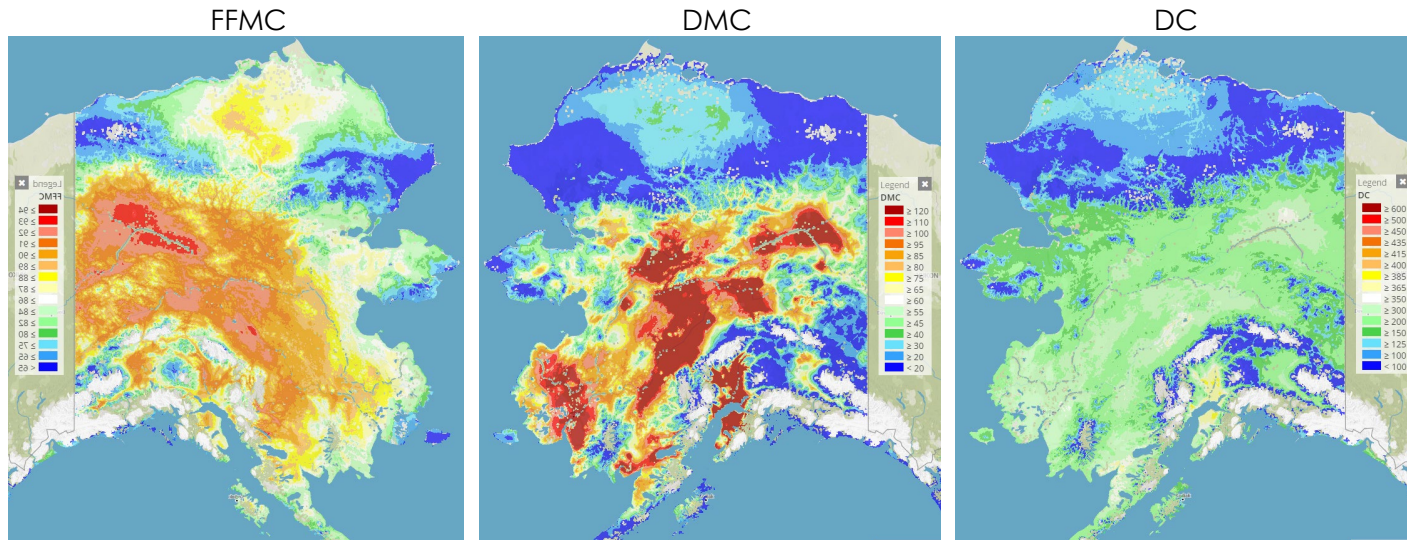
### Mitigation Measures:

- Ensure that you can recognize hazardous fuel types including tundra that is exceptionally dry.
- Understand the triggers and thresholds for problem fire behavior.
- Monitor forecasts and indices to anticipate areas of increased flammability and extreme fire behavior.
- Maintain clear communications when working around active fires.

**Area of Concern:** Southwest Alaska, and the central Interior. Conditions over the next few weeks may spread to include a wider portion of Alaska.

**Issued By:** Alaska Interagency Coordination Center Predictive Services

Click on the following images for direct links to the maps.



For additional fuels information visit <https://akff.mesowest.org/>

Sources: AICC Predictive Services – Fuels/Fire Danger web page, Alaska Fire & Fuels web page

## Prioritized Incident Details

New and emerging initial attack within Alaska is #1																	
Priority	Unit	Seq. #	Incident	Descriptive Location	Size in Acres	48 hr. Change	% Contained/ Completed	Expected Contain/ Complete Date	Suppression Strategy	Complexity/IC	Total Personnel	Crews Assigned			Helicopters Assigned		
												T-1	T2	T2IA	T-1	T-2	T-3
2	AK-SWS	899	Lime Complex	E. of Chuathbaluk, AK	528,260.0	9,550.0	0%	7/16	Comp	IMT2 / AK Black Team	215	2		1		3	1
3	AK-DNR	346	Clear	NW of Anderson, AK	4,413.0	2,482.0	5%	7/6	Comp	IMT2 / NW Team 10 mobilizing	117	2		1		2	
4	AK-TAD	327	Hutlinana	E. of Manley Hot Springs	389.0		0%	8/31	Ctn		54	2		1			
5	AK-DNR	349	Minto Lakes		1,248.0					IMT3 NW Delgado							
6	ANCSA	351	Boulder		381,808.0	(18.5)			Ctn		8			1			
7	AK-DNR	46	Tanana		0.1				CTN								
8	AK-TAD	315	Chitanana		6,831.0			8/31	Comp	IMT2 NW Team 7 Lefevre	74	3					
9	AKYDR	160	East Fork		166,760.0				Comp	ICT3 Stark/Dudley	116	1				2	
10	AK-TAD	319	Fish	SE of Bettles, AK	166.0		1%	8/30	Comp	IMT3 GB	73	2				1	1

Source: AMAC Incident Prioritization List, ICS-209s

The Coffee Brief is posted at PLs 4 and 5 only.

